

Applications

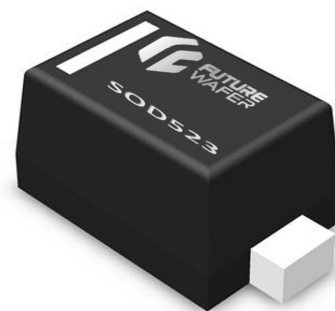
- Lan equipment
- Video
- DVI
- High Speed Data Line
- Ethernet
- USB 2.0 Power and Data line Protection

Feature

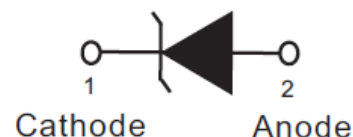
- With TVS Diode
- ESD Protection:Level 4
- Low clamping voltage
- 100 Watts peak pulse power per line($t_p=8/20\mu S$)
- Ultra low capacitance:20pf max.(any I/O to GND.)
- Protection one line I/O port

IEC Compatibility

- EN61000-4
- 61000-4-2(ESD):Level 4,Contact: $\pm 15kV$,Air: $\pm 25kV$
- 61000-4-4(EFT):40A-5/50ns
- 61000-4-5(Surge):3A-8/20us



SOD523



Mechanical Characteristics

- Molded JEDEC SOD523 package
- Packing:Tape and Reel
- Flammability rating UL 94V-0
- Halgen Free

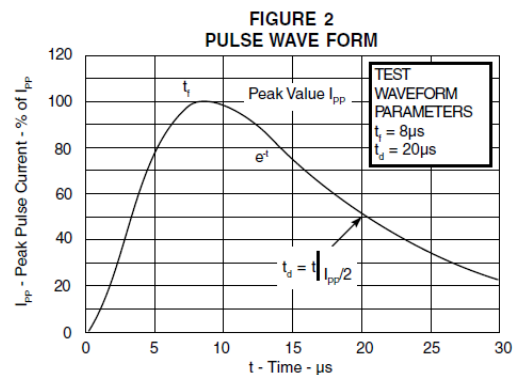
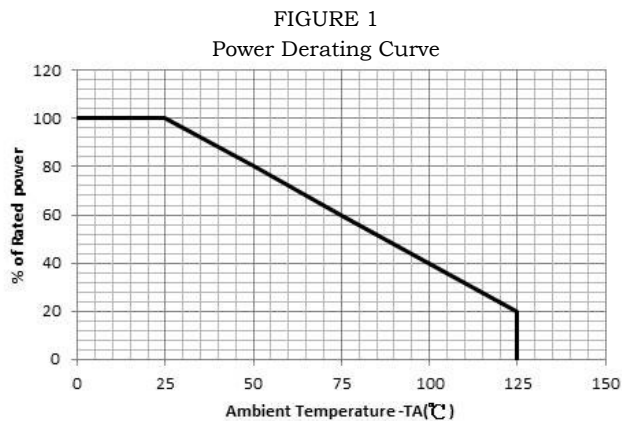
Device Characteristics

Maximum Ratings@25 unless otherwise specified			
Parameter	Symbol	Value	Units
Peak pulse power ($t_p=8/20\mu s$)	P _{PP}	120	Watts
Operating Temperature	T _J	-55~150	°C
Storage Temperature	T _{STG}	-55~150	°C

Electrical Characteristics

Parameter	Symbol	Condition	min	max	Units
Reverse Stand-off Voltage	VRWM			24	V
Reverse Breakdown Voltage	VBR	Iz=1mA	26.7		V
Reverse Leakage Current	IR(max)	@VRWM		1	uA
Forward Voltage	VF(max)	IF=15mA		1.15	V
Clamping Voltage	VC	I _{PP} =1A tp=8/20us		40	V
Peak Pulse Current	I _{PP}	tp=8/20us		3	A
Junction Capacitance	C _{I/O}	Pin capacitance to GND. Vdc=0V, f=1MHZ		20	pf

Rating and characteristic curve



Electrical Characteristics (T = 25°C)
V_c (Clamping Voltage)

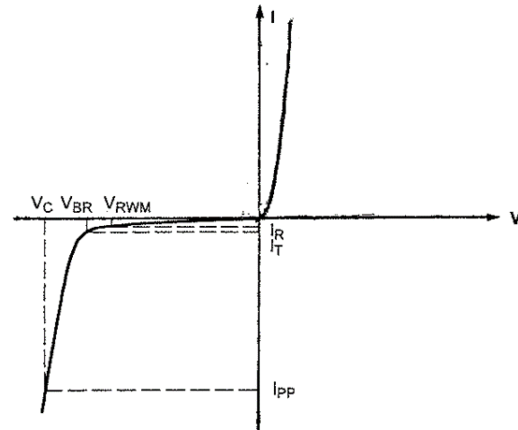
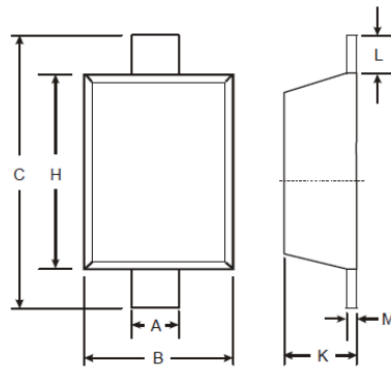
 Voltage across the TVS diode at the I_{pp} (peak pulse current)

V_{BR} (Reverse Break Down Voltage)

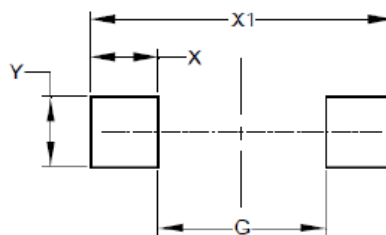
Voltage at which the TVS diode turns on (conducting state)

V_{RWM} (Reverse Standoff Voltage)

Voltage at which the TVS diode turns off (high impedance state)


Ordering information


SOD523		
Dim	Min	Max
A	0.25	0.35
B	0.70	0.90
C	1.50	1.70
H	1.10	1.30
K	0.55	0.65
L	0.10	0.30
M	0.10	0.12
All Dimensions in mm		



Dimensions	Value (in mm)
G	0.80
X	0.60
X1	2.00
Y	0.70

Marking codes

Part No.	Marking Code
FESD24V	FX
Quantity	5,000pcs



Futurewafer Technology Co., Ltd 台灣未來芯航電股份有限公司

Tel : +886-3-3573583/Tel : +886-3-3574065

Futurewafer.com.tw

桃園市桃園區中正路 987 巷 50 弄 2 號